

# Spirent **Landslide**™ for the Evolution to 5G

## 5G Mobility Infrastructure Testing Platform

### The Evolution to 5G

The next generation of mobile networks—commonly known as 5G—promises a revolution in cellular communications enabling services such as massive IoT, Fixed Wireless Access and enhanced Mobile BroadBand (eMBB).

Based on completely new radio access, core and network design (including slicing, separation of control and user plane and distributed network functions), 5G supports massive density of devices of any kind, operating at increased speeds with minimum latency, while making an efficient use of the network's resources.

To ensure a successful adoption of this new technology carriers and equipment manufacturers alike must define an evolution strategy (from 4G extensions and 5G non-standalone to true native-5G), and ensure that the infrastructure can handle the requirements of such evolution.

Spirent's Landslide emulates 5G devices and network functions to validate new 5G mobile and core nodes, ensuring their readiness to deliver high-quality 5G services.

### Landslide Features

The Spirent Landslide 5G mobility infrastructure test platform incorporates device emulation and network testing capabilities that expand through various 3GPP releases (Release 13 and onward). The Landslide 5G testing feature set supports validation needs for the entire evolution path to 5G:


 Extensions to 4G

Non-Standalone 5G

True Native 5G

In particular, Spirent Landslide's 5G testing offers:

#### 1. Extensions to 4G

- High scale device emulation of all types including IoT devices as defined in the CAT-M and NB-IoT standards supporting PSM and eDRX
- IoT-specific node testing and emulators such as: ClOT Serving Gateway Node (C-SGN), Service Capability Exposure Function (SCEF) and the enhanced-for-IoT Home Subscriber Server (HSS)
- Network slicing testing and emulation in different forms such as Release 13 Dedicated Core (i.e., DECOR)
- Release 14 Control and User Plane Separation (CUPS), nodes testing with supporting node emulators such as SGW-C, SGW-U, PGW-C, PGW-U
- Virtualized-network testing supporting DevOps methodologies for optimized deployment
- Device and service Busy Hour call modelling

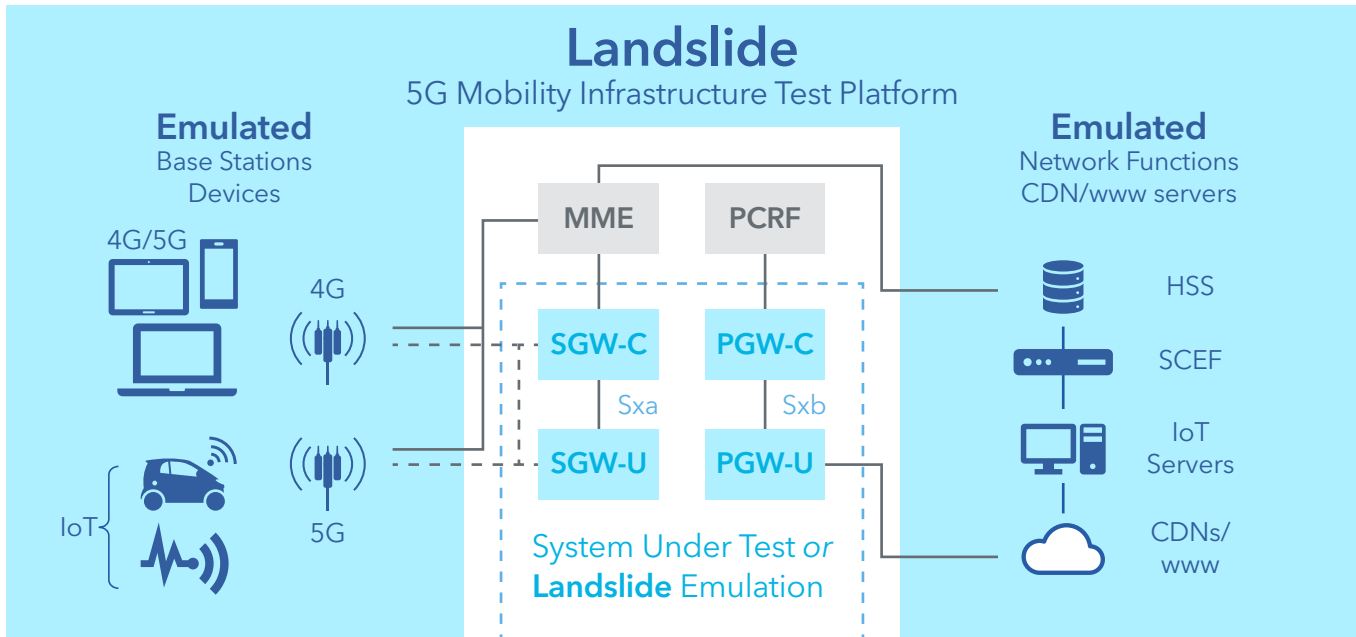
#### 2. Non-Standalone 5G

- 4G/5G Dual-connectivity: High scale 5G device emulation of any kind (eg; smartphone, IoT, vCPE, ...), with 4G and 5G radio access node emulation (eNodeB, gNB), for dual-connectivity testing as defined as Option 3 in 3GPP standards
- Combined 5G and non-5G device load generation capability
- 5G to 4G fallback scenario emulation
- 4G to 5G and 5G to 4G S1-U re-selection based on service requirements
- Device and service Busy Hour call modelling
- Full 4G Core emulation for 5G RAN and dual-connectivity testing

#### 3. True-Native 5G\*

- 5G Nodes testing and emulation
- Native CUPS
- Native Slicing

## System Overview



The **Landslide** 5G Mobility Infrastructure Test Platform supports Release 14 CUPS (Control & User Plane Separation) and 5G NSA (Non-Standalone) dual-connectivity.

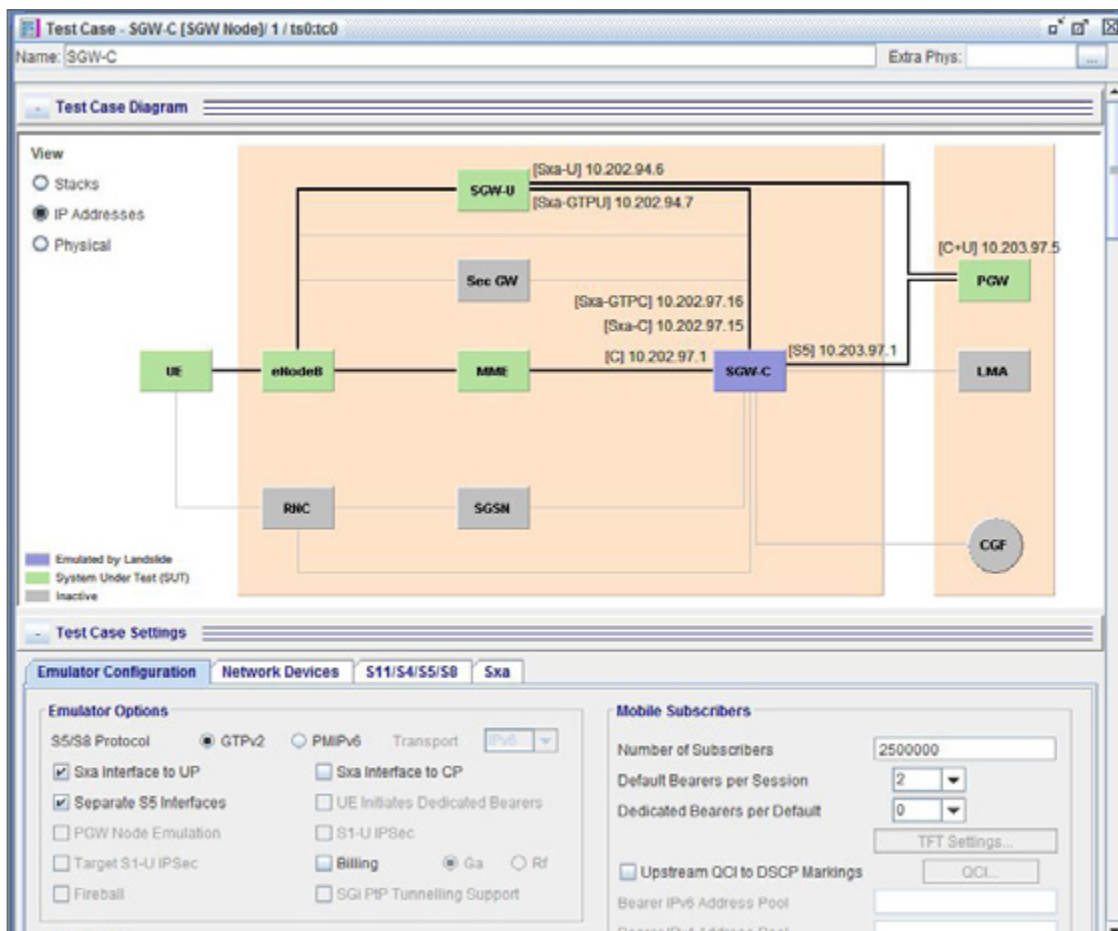
Spirent Landslide's 5G emulation feature set, capacities and performance align with the requirements of the evolution towards 5G, being able to emulate millions of devices of all types communicating with the network at rates of tens of thousands of events per second and traffic of Gigabits per second. With its unique dynamic testing capability, Landslide can test all the 4G and 5G infrastructure nodes in isolation and subsequently change the testing topology to progressively incorporate more nodes to the testbed for a full end-to-end network or slice validation.

Complex 5G call modeling scenarios can be created that include specific 5G devices in various stages of activation, deactivation, dual-connectivity, handovers and 5G data transfers. Carriers also can capture measurements in the live 5G network and replicate them in the lab with Landslide for increased realism in the testbed.

In addition to the extensive 5G testing capabilities, Spirent Landslide also offers individual 5G-related node emulators (e.g., gNB, SGW-C, SGW-U, PGW-C, PGW-U). This emulation option is ideal for lab setups where a 3GPP compliant node is required to complete a test objective.

## Applications

- **Generate** massive scale of device connections and diverse speed traffic patterns to the network as it is expected in 5G
- **Validate** virtual core 5G deployments throughout the entire DevOps lifecycle
- **Verify** compliance of R14 CUPS nodes (SGW-U, SGW-C, PGW-U, PGW-C), in isolation prior to network integration
- **Validate** CUPS multi-node deployments
- **Define** network slicing based on services requirements and verify correct slice traffic routing
- **Quantify** slices' performance in terms of latency and throughput
- **Test** Dual-RAN access against different EPCs and network slices
- **Analyze** RAN performance and handoff based on service quality requirements
- **Design** backhaul size and connectivity to support 5G demands
- **Perform** progressive network integration and interoperability of the new 5G nodes
- **Design** automated procedures of network function distribution including Mobile Edge Computing (MEC)
- **Analyze** and monitor quality of 5G services under real world conditions
- **Characterize** traffic prioritization and resources management policies for 5G in shared networks
- **Perform load testing with busy** hour call modeling
- **Test** lab completion with related emulators: SGW-U, SGW-C, PGW-U, PGW-C, gNB



## About Spirent Communications

Spirent Communications (LSE: SPT) is a global leader with deep expertise and decades of experience in testing, assurance, analytics and security, serving developers, service providers, and enterprise networks.

We help bring clarity to increasingly complex technological and business challenges.

Spirent's customers have made a promise to their customers to deliver superior performance. Spirent assures that those promises are fulfilled.

For more information, visit:  
[www.spirent.com](http://www.spirent.com)



## Technical Specifications

<b>Test Activities</b>	Capacity Test Session Loading Command Mode/Command Sequencer Session Loading with Mobility Intra-LTE Mobility Scenarios Dual-connectivity handoff Inter-Technology/I-RAT Mobility Scenarios
<b>Landslide test platforms</b>	Landslide C100-M4 Landslide C50 Landslide E10 Landslide Virtual
<b>5G Related Specifications</b>	3GPP TS 23.214 v14.4.0 3GPP TS 23.007 v14.4.0 3GPP TS 29.244 v14.2.0 3GPP TS 29.303 v14.3.0 3GPP TS 36.300 v13.2.0 3GPP TS 37.340 v15.0.0 3GPP TS 38.801 v14.0.0 3GPP TS 23.401 v13.7.0 3GPP TS 24.301 v13.6.1 3GPP TS 36.413 v13.3.0 3GPP TS 29.274 v13.6.0 3GPP TS 29.336 v13.4.0 3GPP TS 29.230 v13.3.0 3GPP TS 23.682 v13.6.0

## Ordering Information

Description	Part Number
3GPP R14 CUPS Sx Interfaces	L-FT-105
3GPP R14 CUPS Sx Interfaces – C50	L-FT-105-C50
5G NSA DUAL-Connectivity	L-FT-106
5G NSA DUAL-Connectivity – C50	L-FT-106-C50

**Landslide** is part of Spirent's Lifecycle Service Assurance (LSA) solution suite. To learn more about **Landslide** and **LSA**, please visit:  
[www.spirent.com/Products/Landslide](http://www.spirent.com/Products/Landslide) and  
[www.spirent.com/Solutions/Service-Assurance](http://www.spirent.com/Solutions/Service-Assurance)

## Contact Us

For more information, call your Spirent sales representative or visit us on the Web at [www.spirent.com/ContactSpirent](http://www.spirent.com/ContactSpirent).

[www.spirent.com](http://www.spirent.com)

© 2018 Spirent Communications, Inc. All of the company names and/or brand names and/or product names and/or logos referred to in this document, in particular the name "Spirent" and its logo device, are either registered trademarks or trademarks pending registration in accordance with relevant national laws. All rights reserved. Specifications subject to change without notice.  
Rev B | 08/18

Americas 1-800-SPIRENT  
+1-800-774-7368 | [sales@spirent.com](mailto:sales@spirent.com)

US Government & Defense  
[info@spirentfederal.com](mailto:info@spirentfederal.com) | [spirentfederal.com](http://spirentfederal.com)

Europe and the Middle East  
+44 (0) 1293 767979 | [emeainfo@spirent.com](mailto:emeainfo@spirent.com)

Asia and the Pacific  
+86-10-8518-2539 | [salesasia@spirent.com](mailto:salesasia@spirent.com)