

Spirent Avalanche

Extreme Scale & Performance (ESP)

Applications and Security Testing Solutions

Today's high-end and carrier class firewalls, gateways, proxies and other network elements required to hold stateful connections have grown exponentially over the years. In order to test the true capacities of these devices, you need a tester that can target and exercise these services at extreme connection rates.

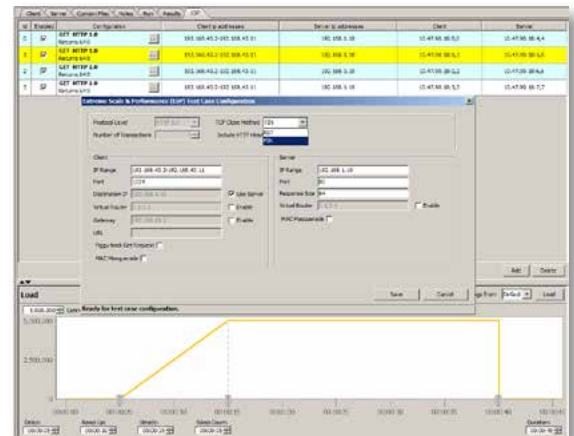
Application

- Target and find maximum setup and tear down rate handling capabilities of devices
- Exercise carrier grade firewalls with minimal amount of test gear
- Add HTTP connection setup tests at over 8 million connections with data-per-second/per-tester, quickly and easily

Features & Benefits

With Avalanche Extreme Scale & Performance (ESP) capabilities it is simple to add extreme rate tests as stand alone tests, or to mix them in the same test and out of the same test port, for maximum flexibility. You can target devices with standard HTTP, FTP, Video, Voice, Storage, and a myriad of other traffic in addition to the new ESP module's capabilities. This will exercise devices and networks to the ultimate limits as never before.

- Quickly and easily add new ESP profiles to a test
- Use MAC Masquerading for maximum realism per emulated connection
- Use Virtual router support to target different networks and subnets in the same test
- Chose various close types per test to realistically mix different connection types at extreme rates
- Mix extreme performance with standard mixed protocol traffic for high realism user-based testing
- ESP is a simple software add-on for the Avalanche C100 class of appliances. Other modules will be supported soon for a myriad of different protocols, operating at extreme performance rates and bandwidth



Spirent Avalanche

Extreme Scale & Performance (ESP)



Spirent Services

Spirent Global Services provides a variety of professional services, support services and education services—all focused on helping customers meet their complex testing and service assurance requirements.

For more information, visit the Global Services website at www.spirent.com or contact your Spirent sales representative.

Requirements

- Avalanche Commander 4.50 or greater
- Avalanche C100 Appliance with 8x10G

Technical Specifications

- HTTP protocol support
- MAC Masquerading
- Virtual Router support
- Target emulated or real services
- HTTP header response
- Piggy-back GET support

Ordering Information

Contact Spirent Communications or your Spirent Communications sales representative for more information.

spirent.com

AMERICAS 1-800-SPIRENT
+1-800-774-7368 | sales@spirent.com

US Government & Defense
info@spirentfederal.com | spirentfederal.com

EUROPE AND THE MIDDLE EAST
+44 (0) 1293 767979 | emeainfo@spirent.com

ASIA AND THE PACIFIC
+86-10-8518-2539 | salesasia@spirent.com